

## FACTSHEET



### AT A GLANCE

**TITLE:** STAGES - Science and Technology Advancing Governance on Good Environmental Status

**PROGRAMME:** Coordination and Support Action, FP7

**TOTAL BUDGET:** €1,119,510

**EC CONTRIBUTION:** €999,733

**DURATION:** 24 months

**START DATE:** September 2012

**COORDINATOR:** CETMAR, Spain

**CONSORTIUM:** 8 partners from 7 countries

**WEB:** [STAGESPROJECT.EU](http://STAGESPROJECT.EU)

### THE CHALLENGE

Member States with marine territories are required to implement measures to ensure that their marine waters achieve Good Environmental Status (GES) by 2020. The drive for healthier seas and oceans was conceived as part of the Marine Strategy Framework Directive (MSFD) which became European environmental legislation in 2008. Defining what actually constitutes GES is a significant challenge for Member States. The MSFD outlines 11 key descriptors of GES to assess the marine environment. These descriptors are intended to provide guidance towards achieving overall GES status.

Significant advances are being made in marine research that can (and will) underpin environmental assessments such as the MSFD. However, the full uptake of this marine knowledge is being hindered by the lack of effective interfaces between science and environmental policy.

**STAGES** (Science and Technology Advancing Governance on Good Environmental Status) is an EC-funded project that will directly address this knowledge gap through a series of targeted support activities that will develop additional scientific understanding for assessing GES and offer solutions to make this knowledge accessible, relevant and usable by policy-makers and stakeholders in the Member States affected.

### PROJECT OBJECTIVE

The **STAGES** project will connect science to policy to help achieve GES status in marine waters. To achieve this objective, the project will bridge the MSFD science-policy gap and improve the current scientific knowledge base to allow Member States to achieve GES. STAGES aims to ensure that all stakeholders are made aware of any new advances in knowledge on GES.

This involves:

- Identifying, extracting and synthesising the knowledge generated through EU and national research-funded activities relating to the MSFD, and making this information widely accessible to policy-makers and MSFD stakeholders.
- Establishing where further research needs to be conducted to improve the scientific knowledge underpinning implementation of the MSFD.
- Providing pragmatic and ready-to-use recommendations to establish an effective European science-policy platform to support GES research and implementation of the MSFD.

## THE CONTEXT OF MSFD AND GES

**Integrated Maritime Policy (IMP)**  
Framework to holistically and sustainably manage human activities in EU territorial waters

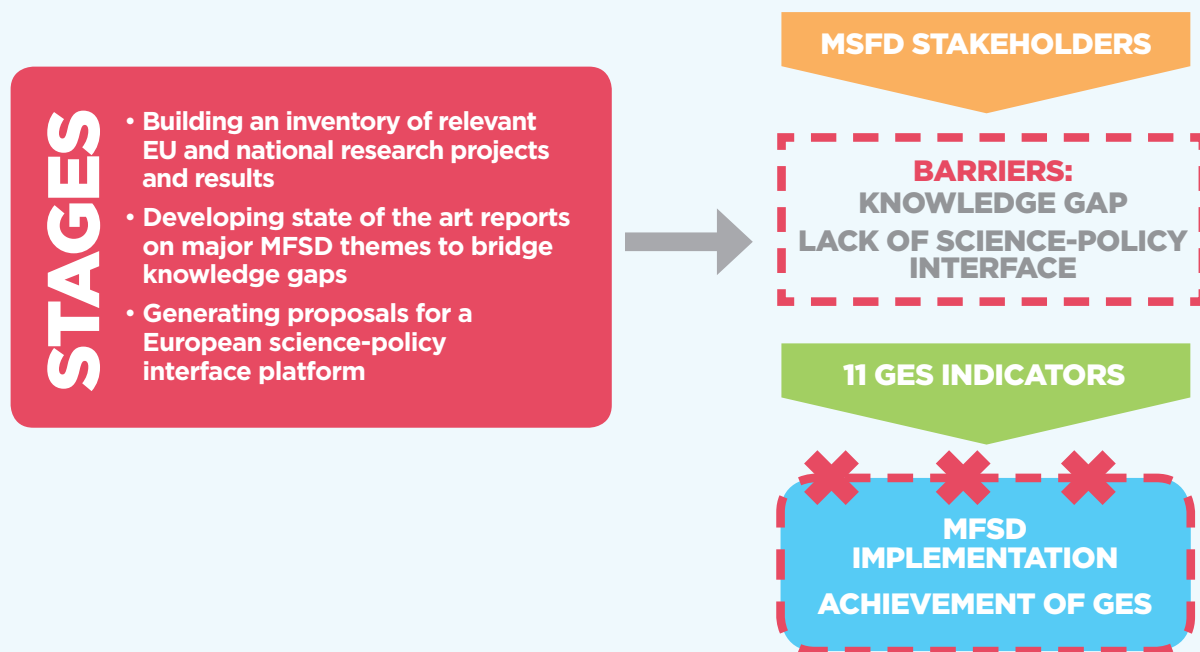
**Marine Strategy Framework Directive (MSFD)**  
IMP environmental pillar  
Delivery of Good Environmental Status (GES) in EU marine waters by 2020

MSFD PHASES AND ACTIONS	TIMING
Assessment of GES in EU waters	2012
Determination of GES	2012
Establish appropriate environmental targets	2012
Establish monitoring programmes	2014
Development of programmes of measures	2015
MSFD Implementation	2016-2020
Achievement of GES	2020
Continuation of MSFD and environmental monitoring	2020+

### MSFD DESCRIPTORS

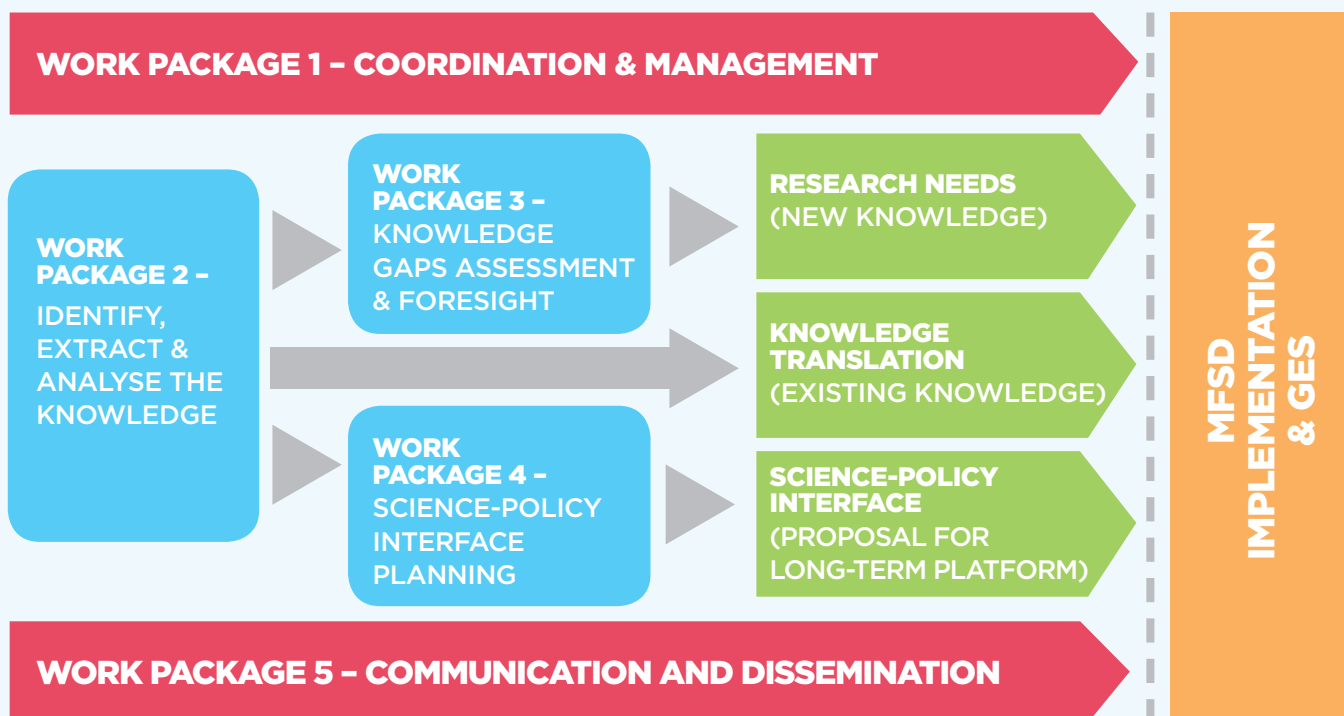
1. Biological diversity
2. Non-indigenous species
3. Population of commercial fish/shellfish
4. Elements of marine food webs
5. Eutrophication
6. Sea floor integrity
7. Alteration of hydrographical conditions
8. Contaminants
9. Contaminants in fish and seafood for human consumption
10. Marine litter
11. Introduction of energy, including underwater noise

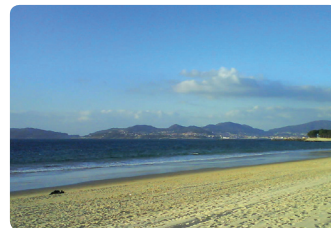
## STAGES HELPING TO OVERCOME BARRIERS AND IMPLEMENT THE MSFD



## WORKING PLAN

STAGES – Science and Technology Advancing Governance on GES





## METHODOLOGY

Working in close consultation with DG ENV, Member State representatives and wider stakeholders tasked with MSFD implementation, **STAGES** will carry out a range of supporting activities:

- 1** A comprehensive knowledge collection will help build an inventory of MSFD-relevant research projects and their associated output.
- 2** Through comprehensive scientific foresight targeted at MSFD knowledge gaps, STAGES will make recommendations as to where future research needs are to be targeted to address identified knowledge deficits.
- 3** **STAGES** will develop innovative solutions to achieve an effective collaboration between MSFD stakeholders. This includes developing a tailor-made proposal for an MSFD science-policy interface which can channel the best scientific advice to the appropriate end-users, thereby underpinning implementation of the Directive in the long term.

## PROJECT PARTNERSHIP

The **STAGES** partnership has been constructed to ensure effective delivery of the ambitious project objectives. It comprises European and international organisations such as ICES and JRC, who were fundamental in developing MSFD Scientific Task Groups, as well as national organisations (IMR, IFREMER, CETMAR) that are responsible for supporting research and providing advice on MSFD implementation at Member State level. The partnership also includes AquaTT and EurOcean, both very experienced in marine science information management and knowledge transfer, and the European Marine Board as a primary marine science-policy think tank in Europe.

### PROJECT PARTNERS

Centro Tecnológico del Mar –  
Fundación (CETMAR)

European Center for Information  
on Marine Science and  
Technology (EurOcean)

Institut français de recherche pour  
l'exploitation de la mer (Ifremer)

AquaTT UETP Ltd (AQUATT)

International Council of the  
Exploration of the Sea (ICES)

Joint Research Centre (JRC)

European Marine Board (MB-ESF)

Institute of Marine Research (IMR)

### CONTACT US

#### PROJECT COORDINATOR

**Marisa Fernández Cañamero**

**STAGES Coordinator**

**Centro Tecnológico del Mar  
– Fundación CETMAR**

**C/ Eduardo Cabello s/n – E-36208  
Bouzas – Vigo (Pontevedra)**

**Tel. +34 986 247 047 Ext. 102**

**Fax. +34 986 297 403**

**[mfernandez@cetmar.org](mailto:mfernandez@cetmar.org)**

**[www.cetmar.org](http://www.cetmar.org)**