

Hellenic Centre for Marine Research (HCMR)

European Marine Board

Autumn Plenary Meeting 2024
1-2 October 2024
Rhodes, Greece

Hosted by the Institute of Oceanography/HCMR
and the Hydrobiological Station
of Rhodes-Aquarium/HCMR



Aris Karageorgis
Director of the Institute of Oceanography
ak@hcmr.gr

Who we are



The Hellenic Centre for Marine Research (HCMR) is a governmental research organization operating under the supervision of the General Secretariat for Research and Innovation (GSRI) of the Ministry of Development



Our mission



Multidisciplinary, Basic and Applied research



protect the marine environment



produce and provide new scientific knowledge regarding marine science



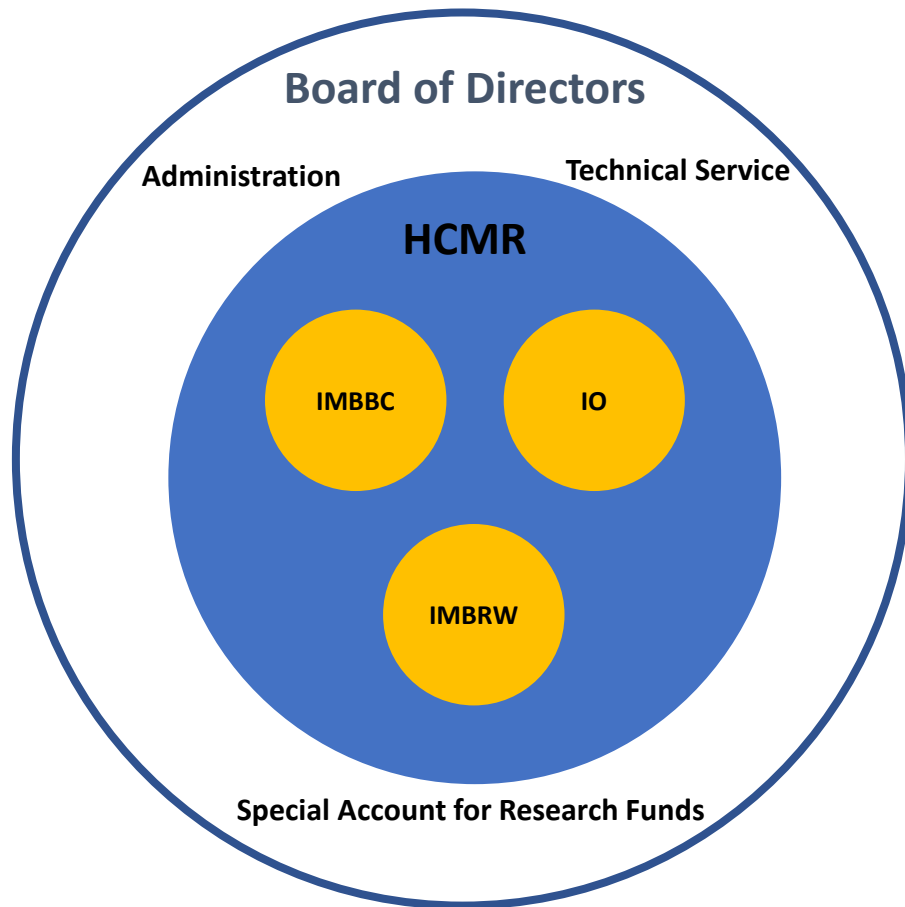
provide advice on environmental sustainability and management



sensitize the public



Structure - Institutes



□ **IMBBC**: Institute of Marine Biology, Biotechnology and Aquaculture

□ **IMBRIW**: Institute of Marine Biological Resources and Inland Waters

□ **IO**: Institute of Oceanography

Facilities



TRITON

Anavyssos - Attica



THALASSOCOSMOS

Gournes - HERAKLION - CRETE
Island



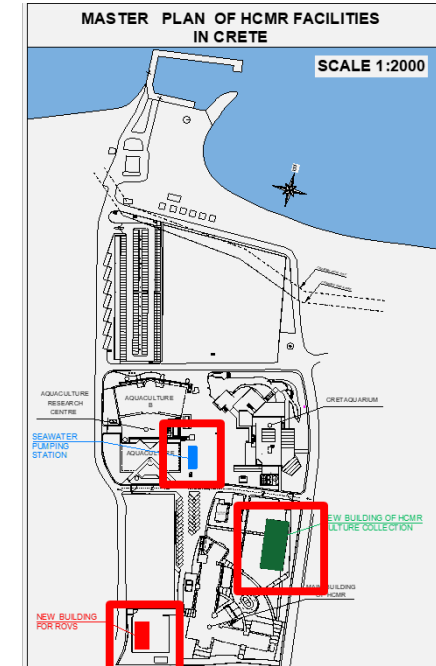
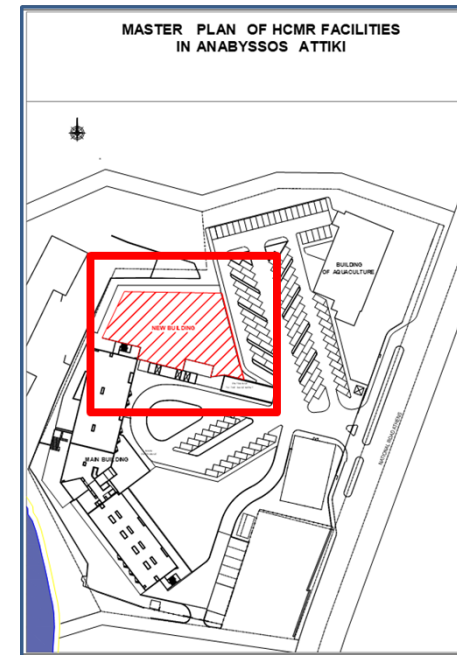
Hydrological Station of Rhodes

Rhodes Island



NEW BUILDINGS - FACILITIES

New facilities
(RRF, next 2 years, 22 M€)



RESEARCH VESSELS



AEGAEO

Built in 1985, Rebuilt in 1997

Length : 61.51 m

Max. Speed : 12.5 Knots

Maximum cruising range : 20 days

On-board Staff

Crew: 21 persons

Scientific personnel: 21 persons



PHILIA

Built in 1986

REBUILT in 2021-2022

Length: 26.1 m

On-board Staff

Crew: 7 persons

Scientific personnel: 6 persons



ALKYON

Built in 2009

Length : 13.4 m

On-board Staff

Crew : 2 persons

Scientific personnel : 8 persons

Underwater Vehicles



Twin Seater Submersible "THETIS"

- : Operating depth : 610m
- : Operating time: 9 hours
- : Survival time : 72 hours



ROV SUPER ACHILLES

- : Maximum operating (dive)
depth: 1.000 m /

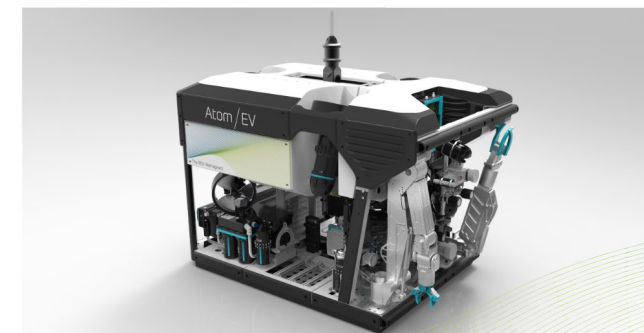


ROV MAX ROVER

- : Model: Max Rover Mark II
- : Maximum operating (dive)
depth: 2000 m

Soil Machine Dynamics
(SMD) Newcastle, UK
Work class ROV, 4000 m

New **ROV 4.5M€**
Recovery and Resilience Facility (RRF)



AQUARIA

- ***Cretaquarium***
(Heraklion)
2.600 m²

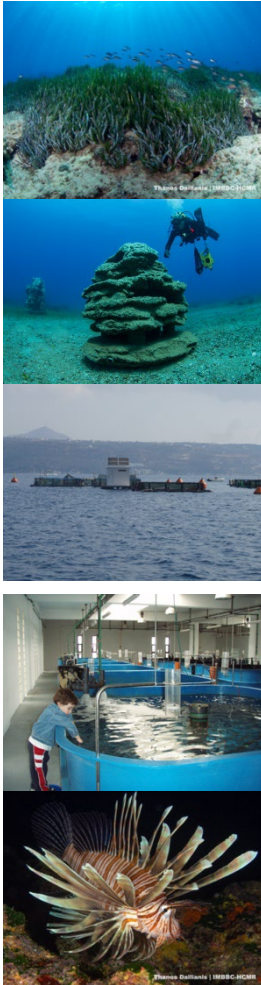


- **AQUARIUM + MUSEUM of HSR**
(Rhodes)
640 m²



Research Directions

Aquaculture



Reproduction



Feeding



Rearing



Ichthyopathology



Behavior



Bioindices



Food quality -safety



Genetics



Genomics



Population genetics



Environmental genomics



Bioanalysis -
Biotechnology



Biodiversity



Ecology



Bioinformatics

Institute of Marine Biological Resources and Inland Waters



Research Directions

- *Sustainable management of fisheries resources*
- *Protection of biotopes and ecosystems in internal and transitional waters*



Institute of Oceanography

Research Directions



- *Marine Biodiversity and Ecosystem Services*
- *Marine pollution*
- *Ocean dynamics, marine renewable energy and climate*
- *Observation, prediction and digital twin of the ocean*
- *Coastal resilience and sustainability*
- *Seafloor and Substratum*
- *Marine governance and participatory actions*



PERSONNEL



~700 employees

- Researchers: ~100
- Permanent: 43%, Non-permanent: 57%

Budget 2023

Government funds M€	Competitive grants M€			
HCMR	IO	IMBRIW	IMBBC	Aquaria
9,5	8,87	7,37	3,38	3,52
	SUM Competitive:		19,6	
	SUM Competitive+Aquaria:			23,14

- Salaries of the permanent staff
- Some utilities (10%)

Overheads: 3.85M€

Ratio Government to Competitive+Aquaria 2,4

Electricity	Cleaning services
Security	Ship maintenance
Water	Building maintenance
Communications	Salaries

Thank you