

Stakeholder Workshop on Maritime Cultural Heritage and Blue Growth: What's the Connection
European Maritime Days
Piraeus Greece 28, 29 May 2015



PROJECTORGANISATIE
MAASVLAKTE 2

MAASVLAKTE 2

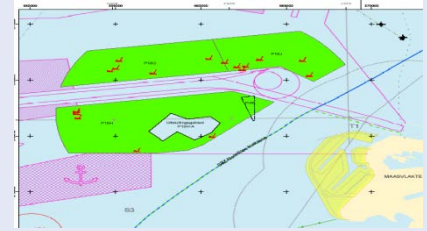
Archaeology in a major infrastructure project, asset or obstacle?

Tiedo Vellinga

Director Environmental Monitoring Maasvlakte 2 Port of Rotterdam Authority &
Prof. Ports & Waterways Delft University of Technology

Scene for archaeological research

- 240 million m³ of sand is extracted from the Northsea to create the new land
- A connecting channel and basins dredged in the (former) shallow sea
- Both in the Northsea, the connecting channel and the basins drowned landscapes removed
- Landscapes in which there is evidence of prehistoric human activity
- European Valetta Treaty (1992) demands responsible care for archaeological heritage
- Implemented in Dutch law in 2007
- Requirement to at least study, investigate and describe the destroyed landscapes

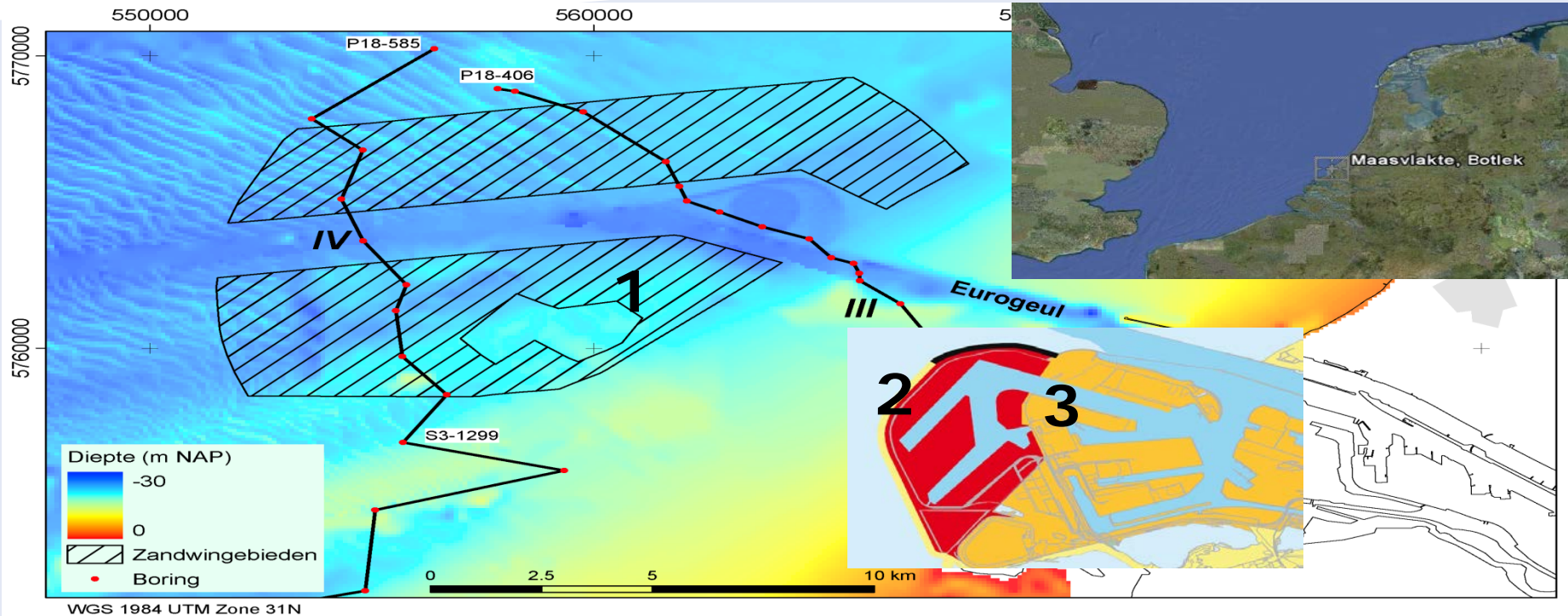


Agreement between Port of Rotterdam (PoR) and the National Agency of Cultural Heritage (RCE) in 2008

Agreement PoR and RCE

- Reservation of max. 3 million euro's for archaeological and related geological and palaeontological research and conservation
- Several projects, several institutes (Deltares, TNO (Geological Survey of the Netherlands), Leiden University, Utrecht University, Museum Naturalis Leiden, Natural History Museum Rotterdam, BOOR (Rotterdam Municipality Archaeological Survey)) and subcontractors (focus on interdisciplinary research)
- Steering Committee by Port of Rotterdam, Cultural Heritage Agency, Rotterdam Archaeological Survey and PUMA (= consortium that build the new port area)
- Logistics not easy: water depths 20 m, meso-tidal regime, traffic of (very) large ships

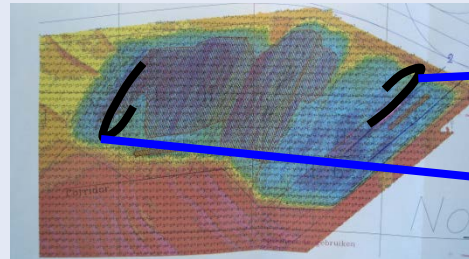
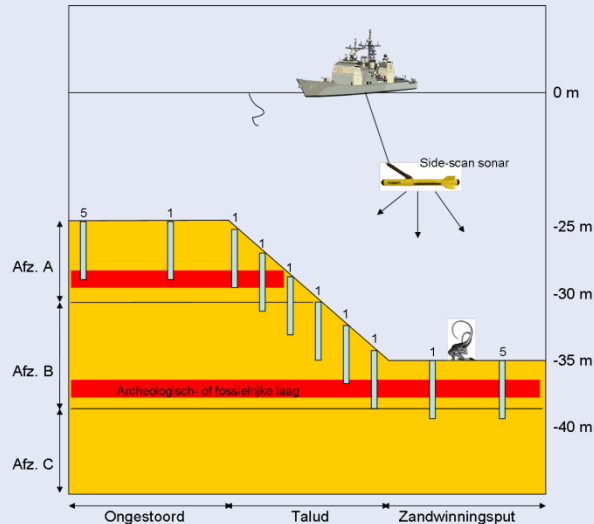
Research locations



- 1 Sand mining area
- 2 Sandy seawall
- 3 Connecting Yangtze channel

Research in sand mining area

- Aim: to position the findings in a geological context (landscape reconstruction)
- Selected borings in the sand mining area and additional seismic survey
- Cerporex survey's
- Linking the dredging site to the disposal location through the dredge track administration



Research at the sandy seawall

- Manual: looking around for bones & artefacts
- Mechanical: beach cleaning

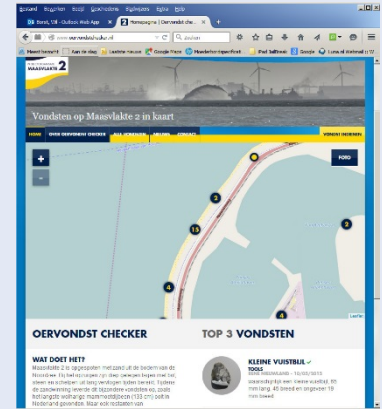


Interesting paleontological findings



Communication and public participation

- Many presentations & publications from 2011 and continuing
- Amateur paleontologists assistance to sort out beach cleaning results in Naturalis
- Archeological weekends in Futureland Maasvlakte 2 exhibition center
- Many times on national television
- Web application to register findings and share with general public



Vondsten op Maasvlakte 2 in kaart

HOME

OVER OERVONDST CHECKER

ALLE VONDSTEN

NIEUWS

CONTACT

VONDST INDIENEN

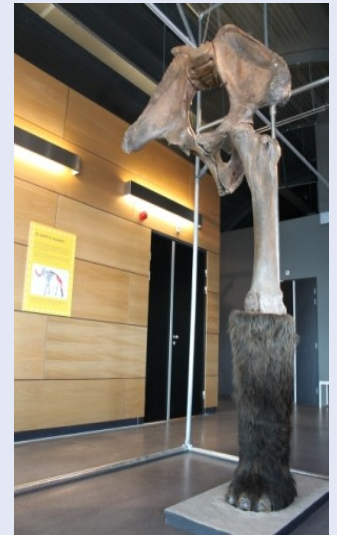


OERVONDST CHECKER

TOP 3 VONDSTEN

FutureLand Maasvlakte 2

FutureLand Ferry | FutureLand Express



Over 100.000 visitors / year

Asset or obstacle ?

