



Cultural Heritage Agency
*Ministry of Education, Culture and
Science*

**“Excavating “ 20
meters under water:
learning by doing at
Maasvlakte 2, the
Netherlands**

Henk Weerts
h.weerts@cultureelerfgoed.nl



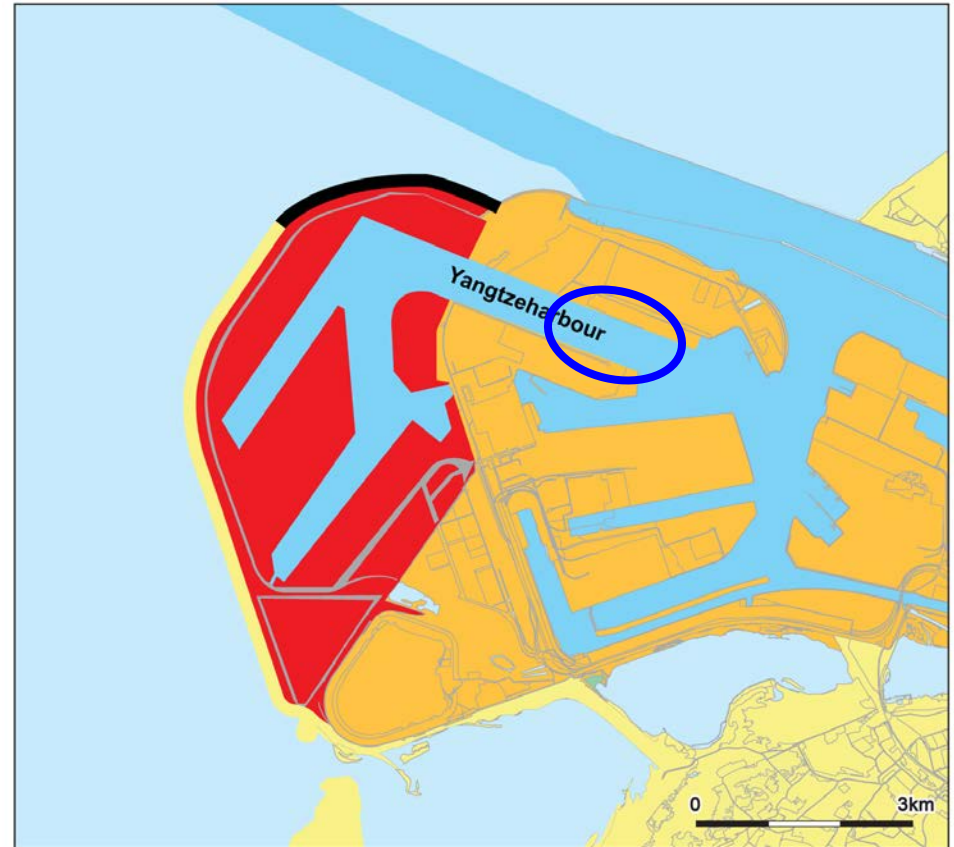
Maasvlakte 2





What is happening?

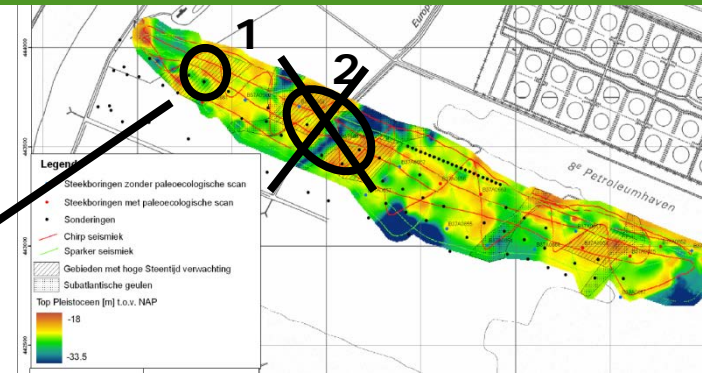
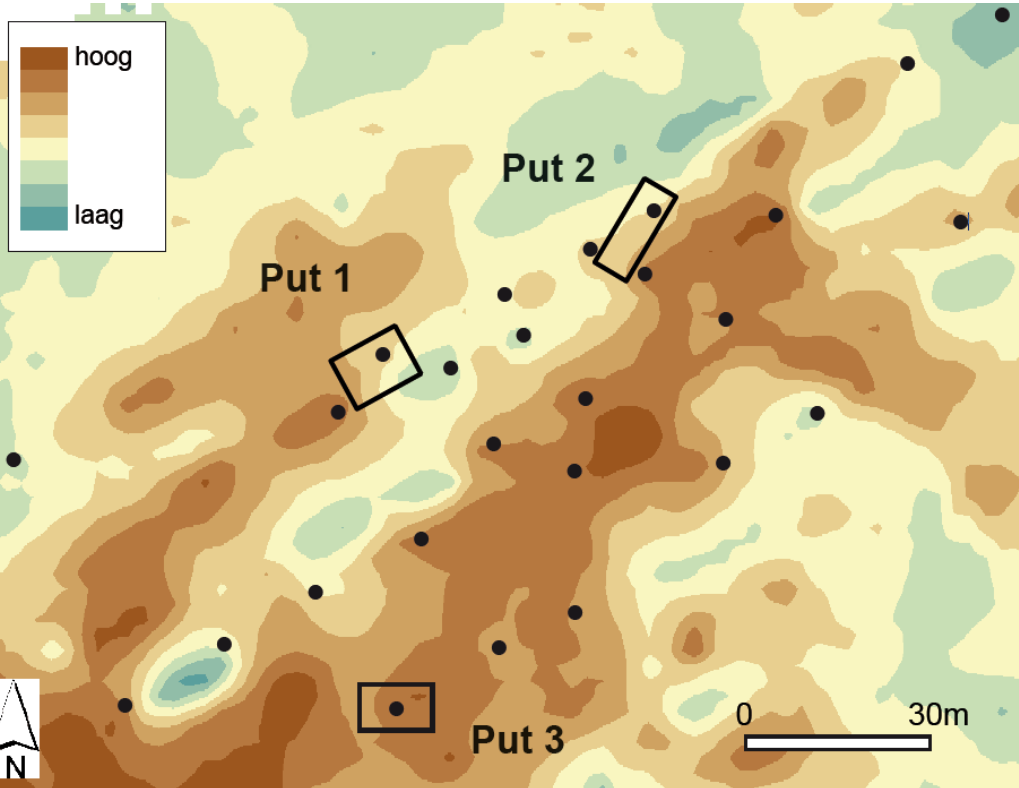
- Maasvlakte2: expansion of the Rotterdam harbour
- Yangtzeharbour (17 m deep) will be the connecting harbour-canal from the Maasvlakte1 to the Maasvlakte2 harbour; 21 m deep
- Possible destruction of Early-Mesolithic sites
- Is there such a site under the Yangtzeharbour or not?





Finding the site

- Model of river dune, based on seismics and 30 drillings,



3 small scale underwater "excavations"



The “excavation”

- Special crane on pontoon in Yangtze harbour, special grab, known from dredging polluted mud from ports and waterways

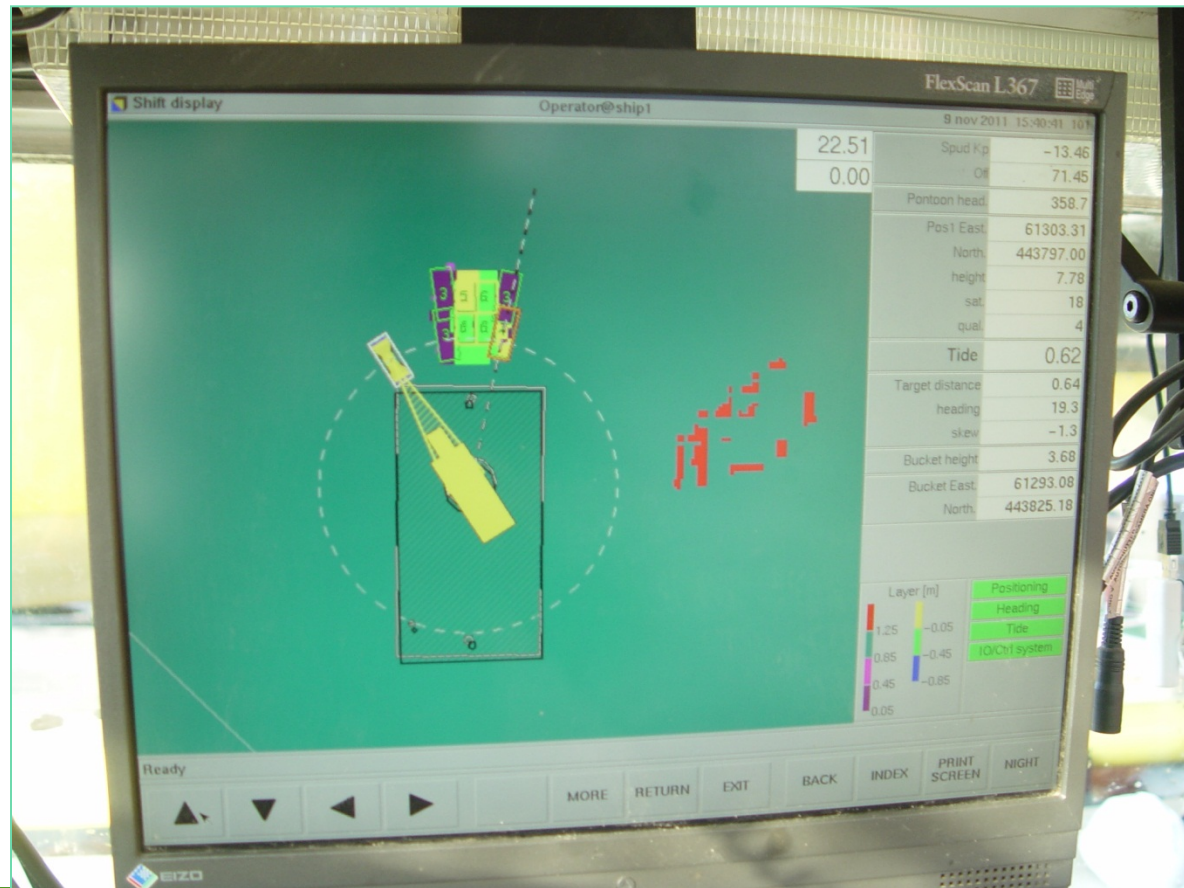
Pictures & data this & next slides: BOOR, PUMA, ADC





The “excavation”

- Computerised logging of the excavation, exact depths by side-scan sonar





The “excavation”

- Sediments of each grab in two big bags, brought on land each day





The “excavation”

- Sieving the sediment on location in the harbour





At the office

- Sorting the sieve-residue





The results

Book: Interdisciplinary archaeological
research programme
Maasvlakte 2, Rotterdam

Website:

www.20metersunderwater.nl

More information:

h.weerts@cultureelerfgoed.nl





Thank You!